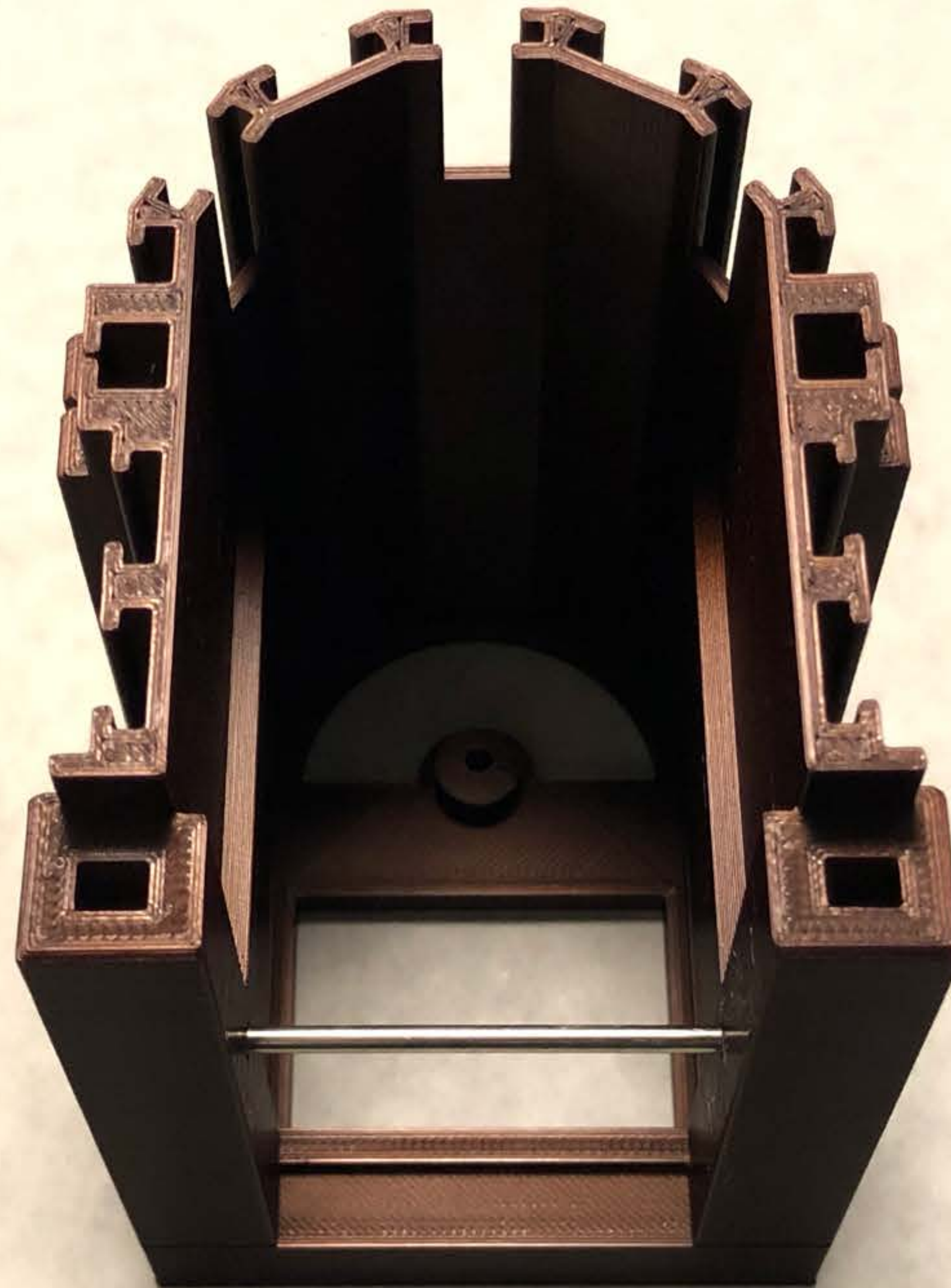


ASSEMBLY Please read instructions first.
Test fit all pieces before gluing.



1 Insert short metal rod into **core**.



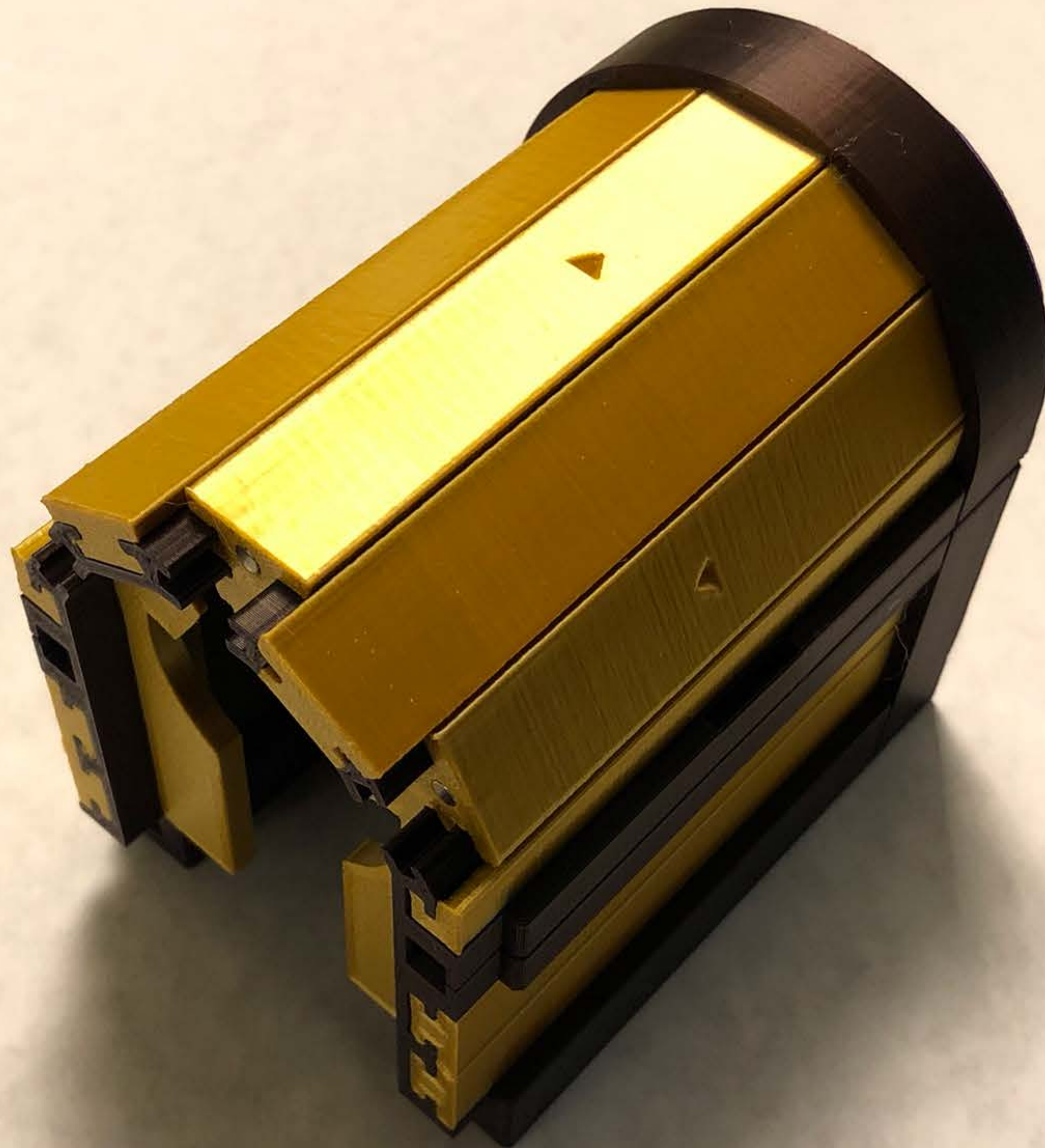
2 Glue **face plates**
into **core** and **cap**.

3 Glue 12 **3mm magnets** into **core, cap, and slats**.

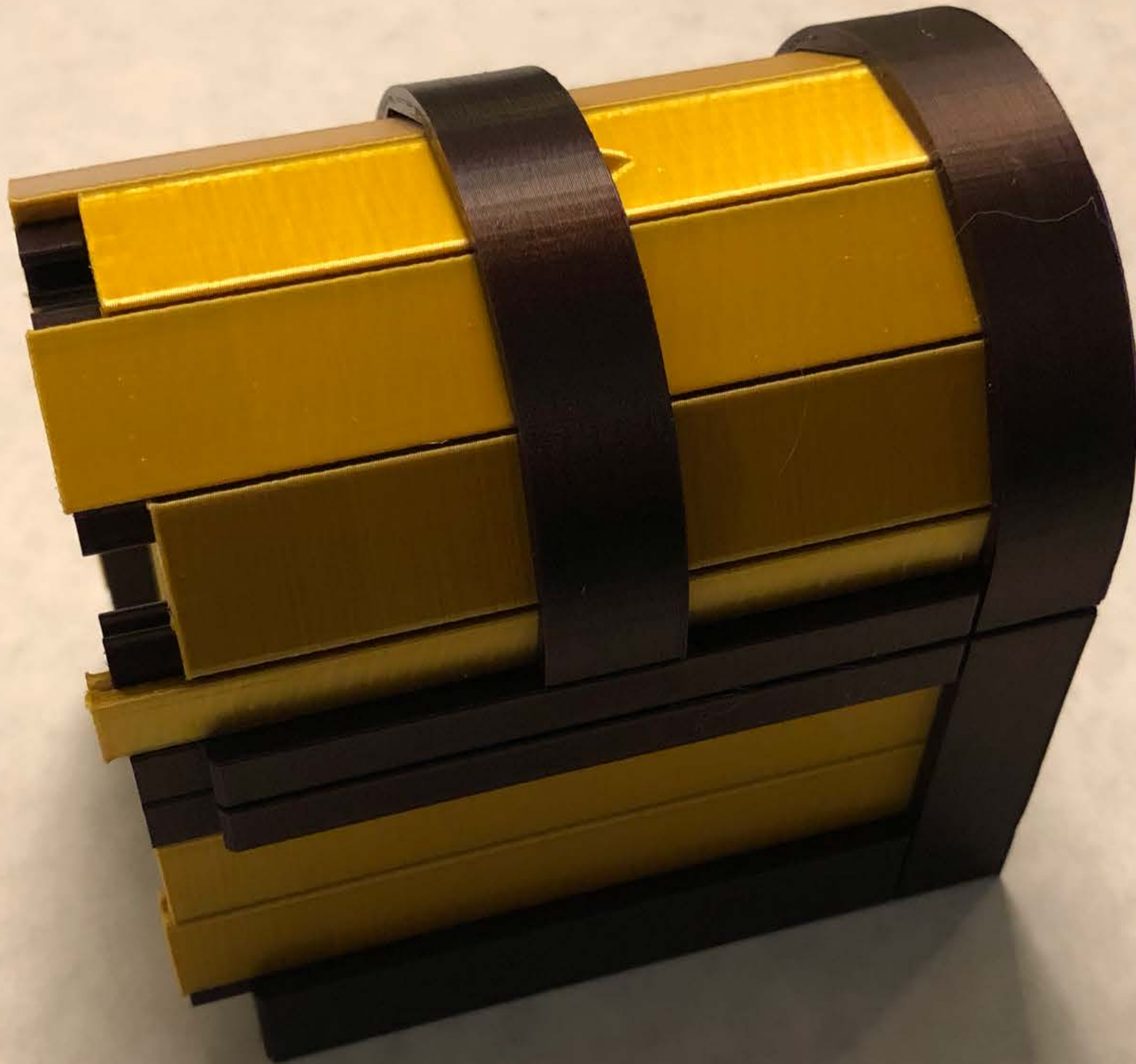
IMPORTANT!

Align magnets so that slats are **pulled toward** the cap and core. With minimal effort, the slats should snap between positions.





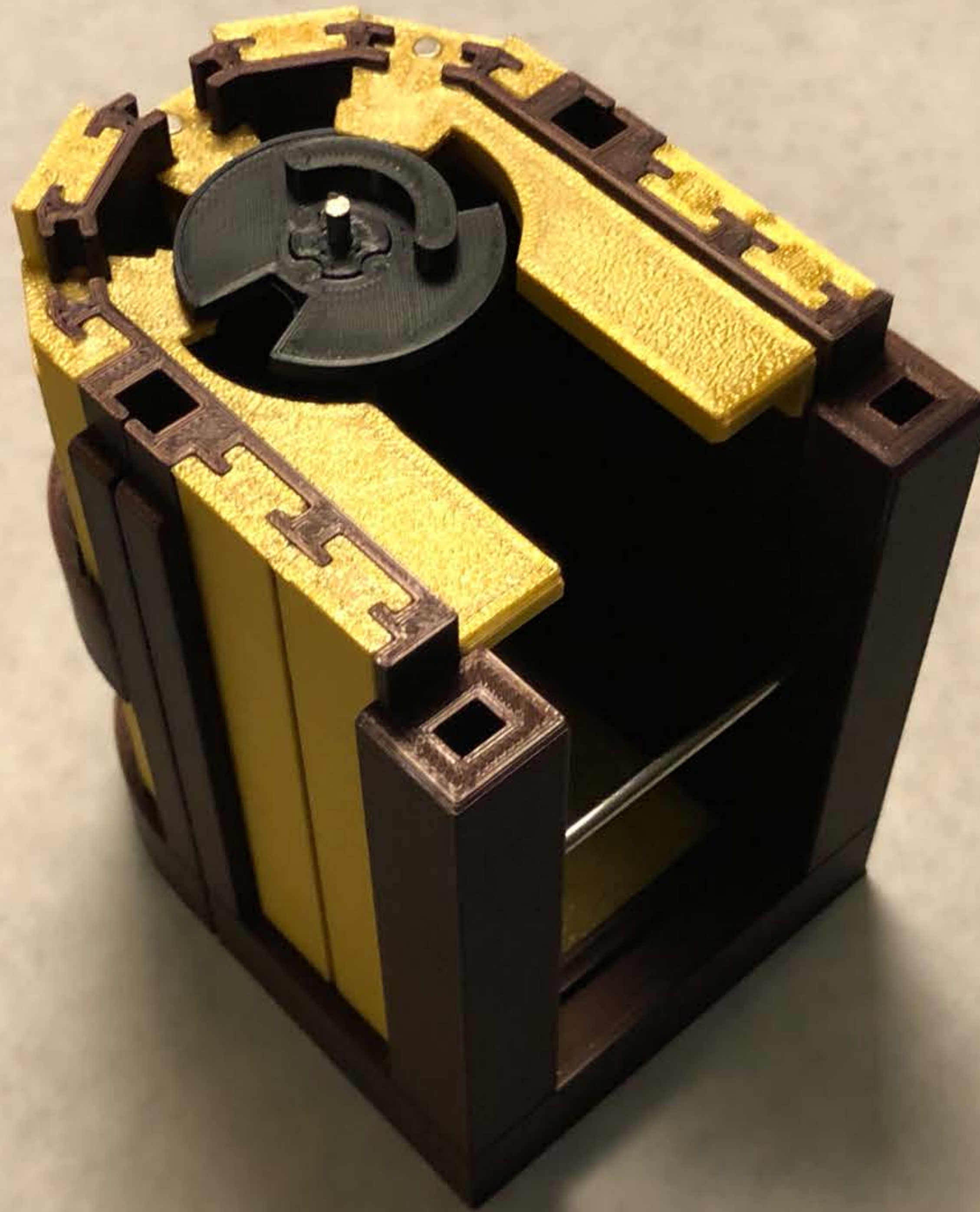
4 Insert **slats** into **core**. Verify that slats marked with a triangle can slide freely.



5 Glue **arch** onto **core**. Only apply glue on the arch tabs.



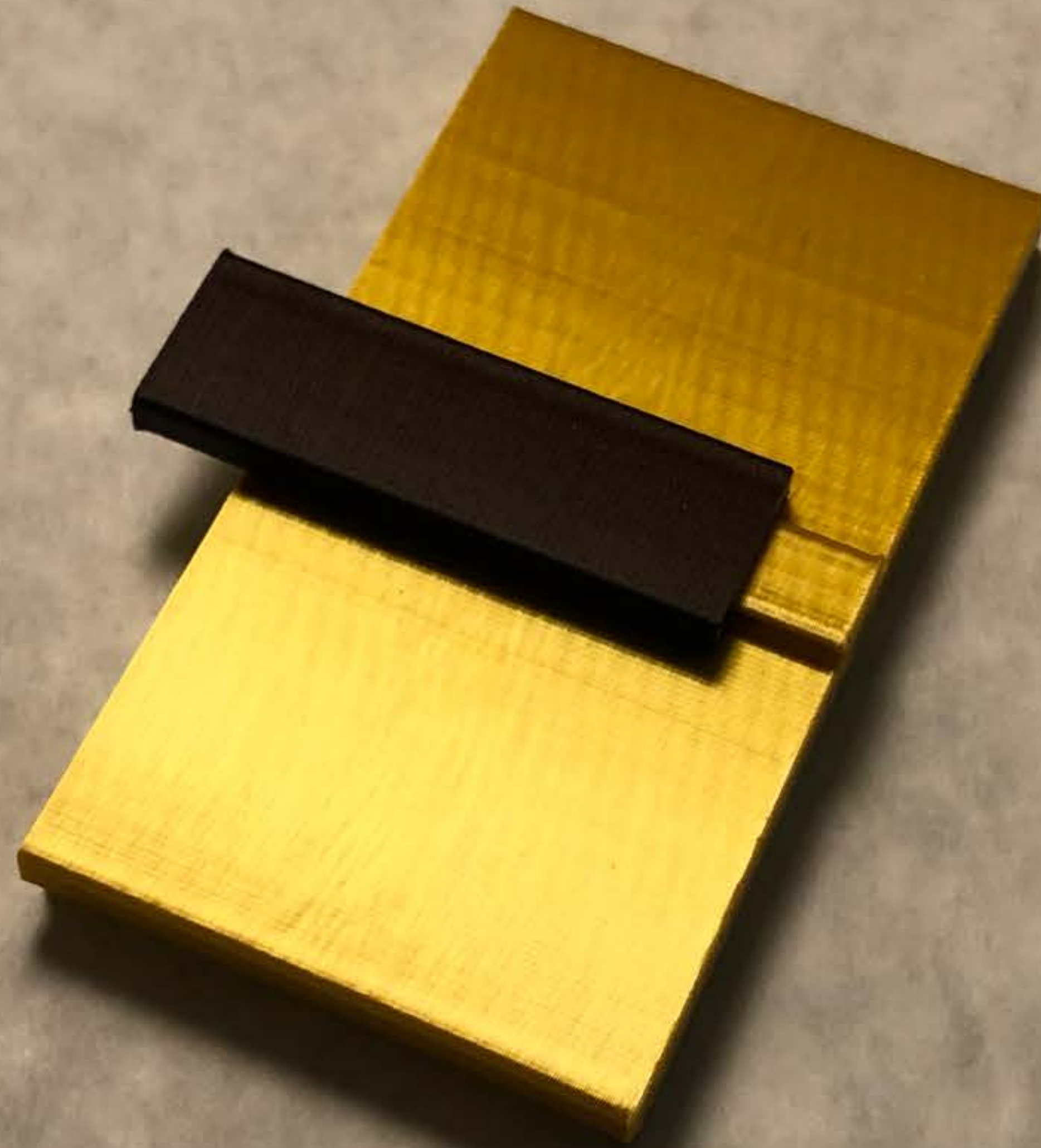
6 Glue **wheel** onto **weighted axel** & insert **long metal rod**.



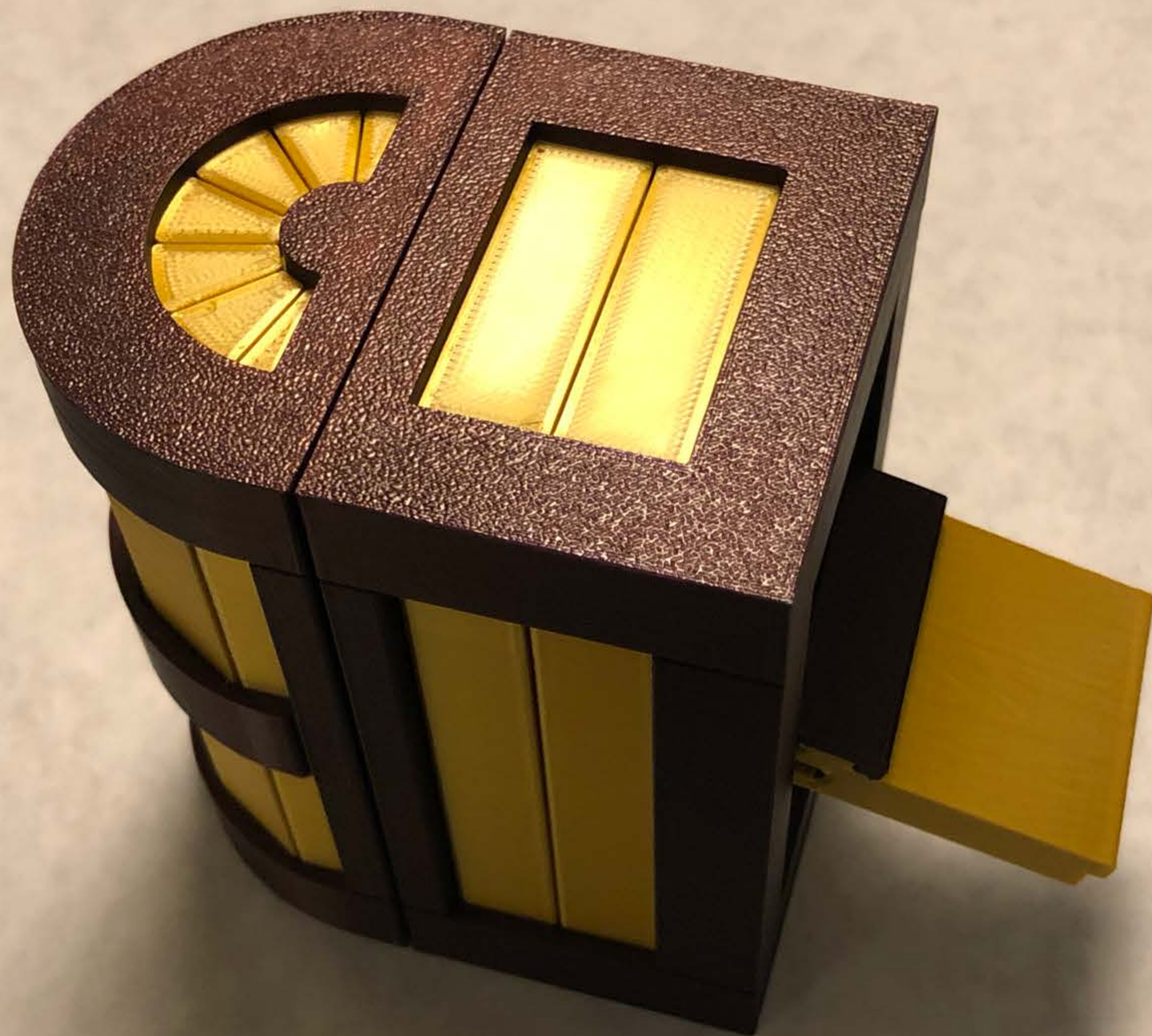
7 Insert metal rod in the **weighted axel** into **core**.



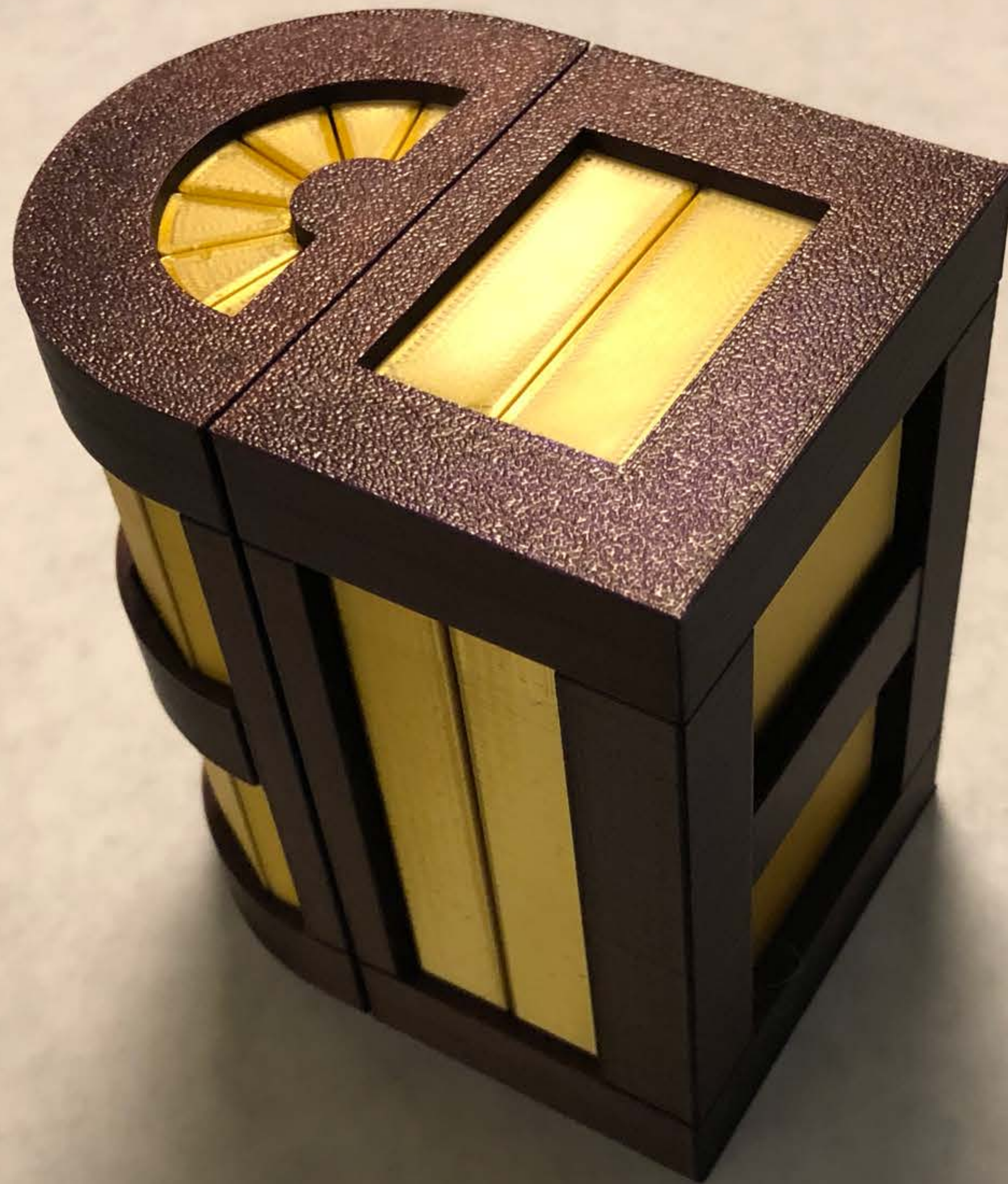
8 Glue cap onto **core**.
Test fit before gluing!



9 Slide **flip cap lid** onto **flip cap**.



10 Slide **flip lid** onto metal rod in core.



11 Close **flip lid**. If lid will not close, follow the puzzle solution steps.